

BREWED & BOTTLED BY



CLIFTON PARK, NEW YORK

BITTERSWEET LENNY'S R.I.P.A. RYE DOUBLE IPA



The Critics Agree...

GOLD MEDAL
WORLD BEER CHAMPIONSHIPS

EXCEPTIONAL

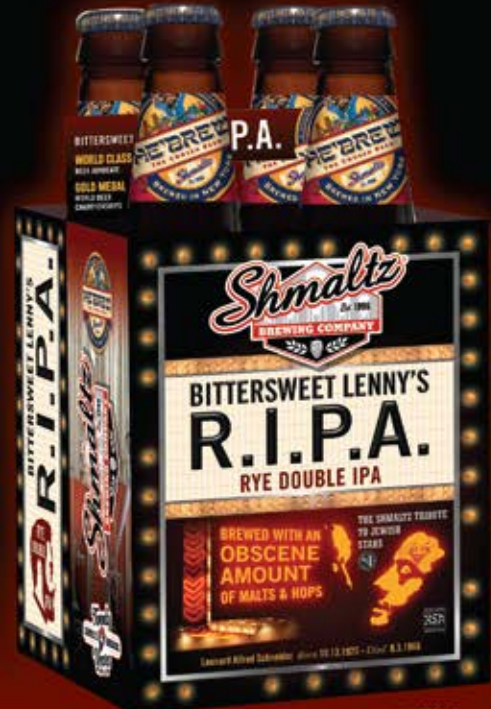
“Rich...smooth...powerful. Makes your heart skip a beat.”
- *Beer Advocate*

“What a fine beer this is... We can't ignore this wonderful brew!”
- *All About Beer*

“Top 10 Hop Monsters”
- *Imbibe Magazine*

“WINNER: Best in Show”
- *Saratoga Beer Festival*

“Bittersweet Lenny's pours a rich, deep mahogany color, topped with a billowing viscous head. The aroma is powerful and boozy, redolent of dark molasses. The flavor? Allow me to quote from my notes: WOW.”
- *Boston Phoenix*



ratebeer

Percentile

97

overall

Beeradvocate

THE BROS

99

world-class



ShmaltzBrewing.com • ShmaltzBrewing

